



# Be a Partner

**YOUR GIFTS TO THE ST. OLAF ANNUAL FUND MAKE A DIFFERENCE THROUGHOUT THE COLLEGE**

**A**sk what a donation to Partners in Annual Giving supports and the answer might logically be: "Everything." As an unrestricted fund, Partners supports the highest priorities at St. Olaf each year, from building maintenance to faculty sabbaticals to upgrading classrooms with new teaching technologies.

*The figures below are the total cost of each purchase or project, of which Partners donations contributed about 4 percent. It all adds up to a better St. Olaf for today's students, giving them a chance at the education you enjoyed.*

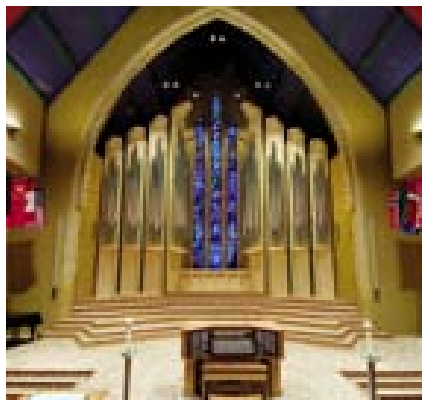
## SOME OF THE WAYS YOUR PARTNERS DOLLARS WORKED IN 2006-07



- New ELCA hymnals in Boe Memorial Chapel: \$18,000

- Mellby Hall, new dormer windows: \$15,000

- Acoustic and aesthetic renovations at Boe Memorial Chapel, including new electrical services: \$2.3 million



- Undergraduate research programs in the humanities, social work and other disciplines beyond the physical and natural sciences: \$50,000

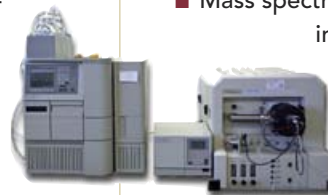


- Honor Houses, new windows: \$30,000

- Upgrade recording equipment in Skoglund Center and Boe Memorial Chapel: \$200,000

- Resurfacing Hoyme tennis courts to make foursquare and basketball courts: \$22,500

- Fourteen new Macintosh computers and eight new PCs for residence halls: \$27,000



- Mass spectrometer, a 1,600-pound instrument that measures the molecular weight of biological molecules such as proteins: \$90,000

- New World Language Center with new lab setting in Rolvaag Library, including 25-seat computing center: \$115,000

- Improved facilities for Student Support Services and Multicultural Affairs and Community Outreach (MACO) in Buntrock Commons: \$25,000

- Literatures in English Conference, hosted at St. Olaf and organized by Professor of English Jonathan Hill: \$4,000





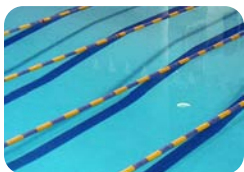
# YOUR GIFTS TO PARTNERS IN ANNUAL GIVING...

■ Bringing "A Collector's Legacy: Richard N. Tetlie," an exhibit of work from the estate of Richard Tetlie '43, to Dittmann Center in fall 2006: \$10,000



■ High-speed scanner for Academic Support Center to create voice files and other reading aids for students with learning disabilities: \$6,200

■ Residence Hall mattresses: \$20,000



■ Pool maintenance and coating of the pool bottom, \$25,000

■ New campus ring road, including retaining walls, parking, stormwater system and walkways: \$1.75 million



■ Renovation of Steensland Hall to set up offices for International and Off-Campus Studies and Asian Studies: \$220,000



fund scholarships, financial aid, academic resources and campus improvements.

let you partner with other alumni and parents to compound the value of your donation.

offer a concrete expression of your commitment to St. Olaf College.

boost our reputation as a national institution in college rankings and for grant requests.

make the St. Olaf experience possible for more students today.

## Thank You!

**9,752**  
alumni donors

**31%**  
alumni participation

**\$3,607,569**  
dollars raised

... for Partnering with St. Olaf in 2006-07!

**Become a Partner today!**

Contact Partners in Annual Giving at 800-733-6523 or [partner@stolaf.edu](mailto:partner@stolaf.edu) to learn more about the Partners giving clubs and "Simply Giving," our monthly automatic giving program.